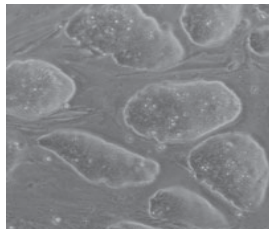




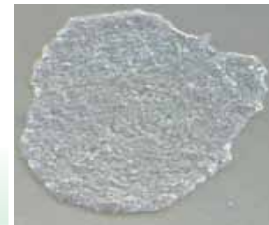
Applied StemCell

ES / iPS Cell Line Characterization Services

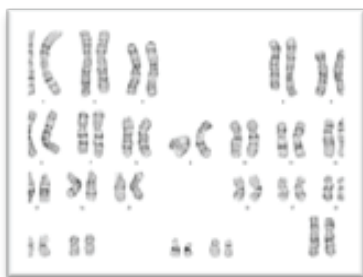
Stringent molecular and functional assays to evaluate pluripotency and to rule out genetic aberrations are commonly required for publication of a newly generated ES or iPS cell line. We offer all services needed for a complete characterization of your pluripotent cell lines.



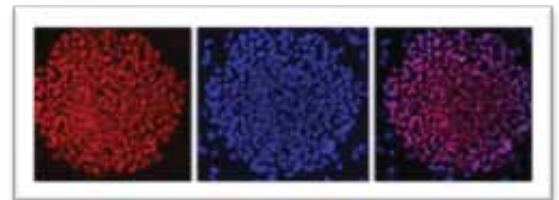
ES / iPS Cell Line



You make the line...*



Karyotyping

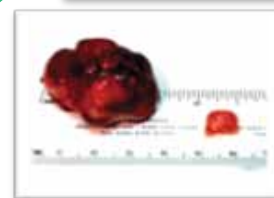
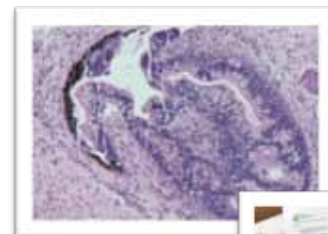


Pluripotency Markers

...**We** do the work!



Germline Transmission



Teratoma Formation

*Or we make your line.

Applied StemCell, Inc.

Tel: 1-866-497-4180 (US Toll Free), 1-408-773-8007 Fax: 1-408-773-8238

1165 O'Brien Drive, Suite A, Menlo Park, CA 94025

E-mail: info@appliedstemcell.com www.appliedstemcell.com

ES / iPS Cell Line Characterization

The Gold Standard



Applied StemCell

Pluripotency Marker Characterization

Pluripotent cell lines are characterized by the expression of marker genes which can be visualized by immunocytochemistry. We do the staining procedure for you and provide you with high-definition publication-grade images.

ASC-6006 \$599 / Cell line

Karyotyping

Prolonged culture of pluripotent cell lines can result in genetic abnormalities, commonly causing aneuploidy. This gain of chromosome number can be easily detected by G-banding of metaphase spreads. We analyze at least 40 cells and provide you with images for your publication.

ASC-6003-C (Chromosome Counting) \$300 / Cell line

ASC-6003-GM (G-banding / mouse) \$650 / Cell line

ASC-6003-GH (G-banding / human) \$700 / Cell line

Sex determination

Is it a boy or a girl? We will give you the answer.

ASC-6004 \$200 / Cell line

Teratoma Formation Analysis

We offer an all-inclusive Teratoma Formation Analysis Service for the characterization of pluripotent human and mouse ES/iPS cells. Publication-quality images and a detailed report including a list of identified tissues will be provided.

ASC-6008 \$2900 / Cell line

Germline Transmission

The most stringent pluripotency criteria for mouse ES/iPS cells is successful germline transmission. We offer two choices: conventional Blastocyst Injection or Tetraploid Complementation. Please contact us for details and pricing.



References:

F.-J. Müller, J. Goldmann, P. Löser, J. F. Loring, *Cell Stem Cell*. 6, **412** (2010)

N. Maherli, K. Hochedlinger, *Cell Stem Cell*. 3, **595** (2008)

Applied StemCell, Inc.

Tel: 1-866-497-4180 (US Toll Free), 1-408-773-8007 Fax: 1-408-773-8238

1165 O'Brien Drive, Suite A, Menlo Park, CA 94025

E-mail: info@appliedstemcell.com www.appliedstemcell.com