



Applied StemCell

Biomarker Characterization Service Report (Human)

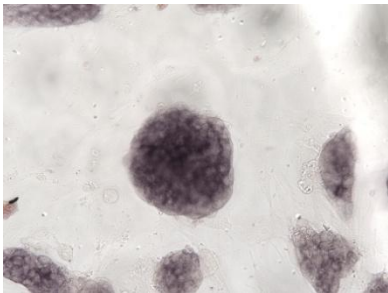
Report Date	4/23/2011
User Name/Organization	John Smith / University of City
PO#	xxx
Experiment Dates	4/19/2011 – 4/20/2011
Test Cell Lines	Human ES Cells (H9)

RESULTS		
Alkaline Phosphatase (AP)	Activity Assay	Positive
OCT4	Immunocytochemistry Assay	Positive
SOX2	Immunocytochemistry Assay	Positive
SSEA-4	Immunocytochemistry Assay	Positive
TRA-1-60	Immunocytochemistry Assay	Positive
TRA-1-81	Immunocytochemistry Assay	Positive

Summary:

The tested cell line, H9 hESC, stained positive for alkaline phosphatase (AP) and for the hES cell-specific pluripotency markers OCT4, SOX2, SSEA-4, TRA-1-60 and TRA-1-81

Alkaline Phosphatase Colorimetric Assay



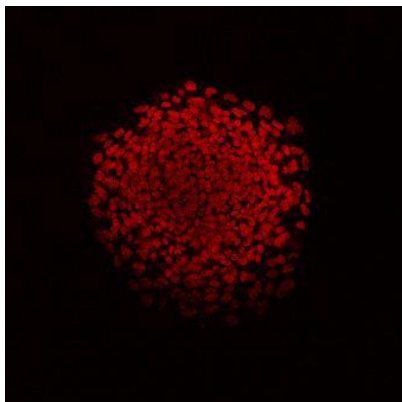
Applied StemCell, Inc.,
1165 O'Brien Dr, Suite A
Menlo Park, CA 94025

Phone: (866) 497-4180 (US Toll Free); 408-773-8007 Fax: 408-773-8238
info@appliedstemcell.com www.appliedstemcell.com

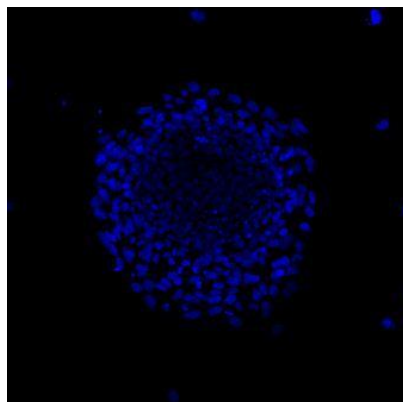


Applied StemCell

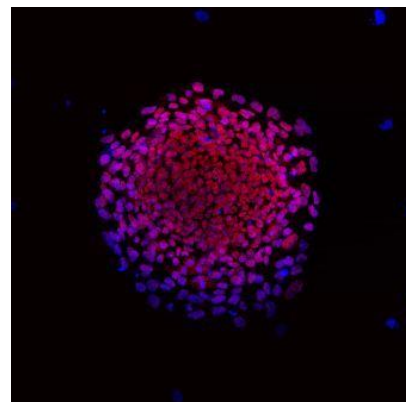
OCT4



Fluorescent Staining

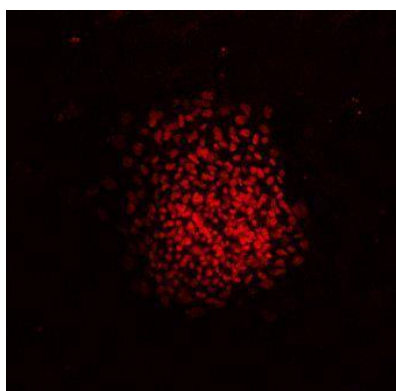


DAPI Staining

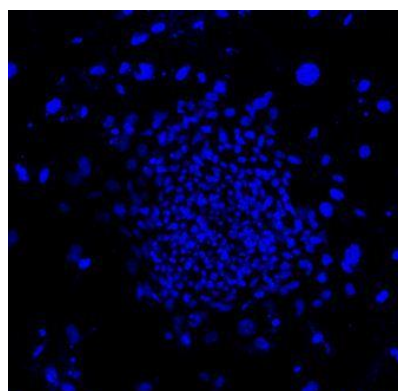


Overlay

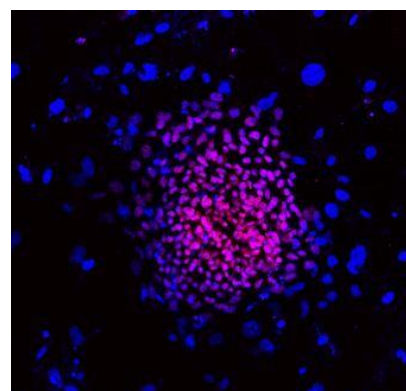
SOX2



Fluorescent Staining



DAPI Staining



Overlay

Applied StemCell, Inc.,
1165 O'Brien Dr, Suite A
Menlo Park, CA 94025

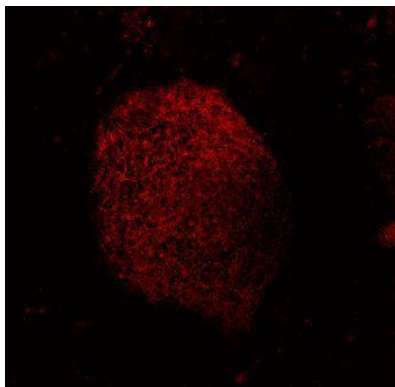
Phone: (866) 497-4180 (US Toll Free); 408-773-8007 Fax: 408-773-8238

info@appliedstemcell.com www.appliedstemcell.com

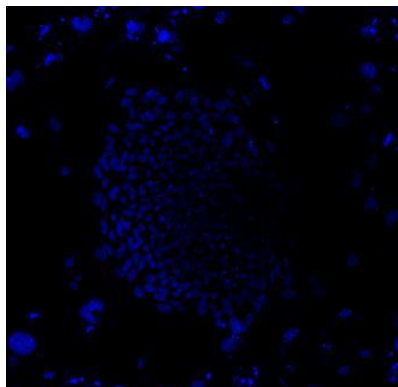


Applied StemCell

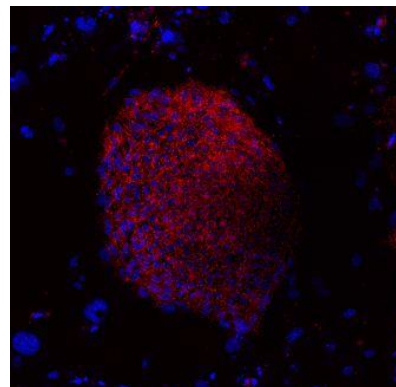
SSEA-4



Fluorescent Staining

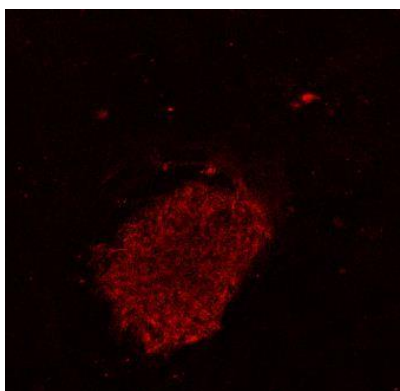


DAPI Staining

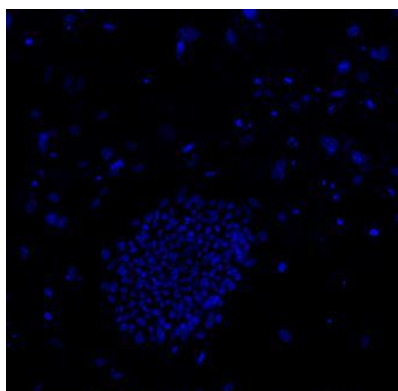


Overlay

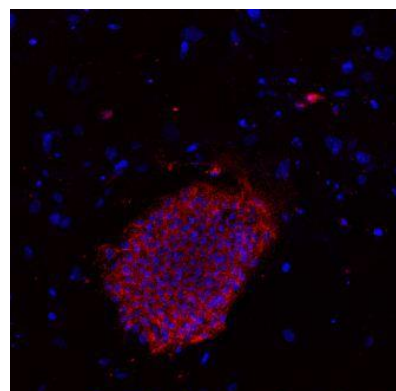
TRA-1-60



Fluorescent Staining



DAPI Staining

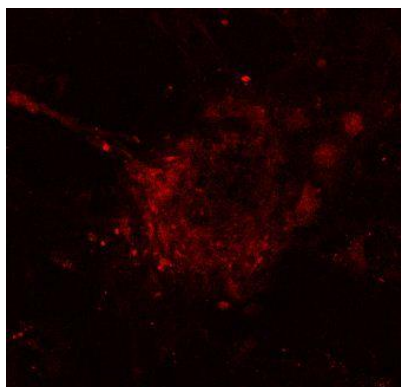


Overlay

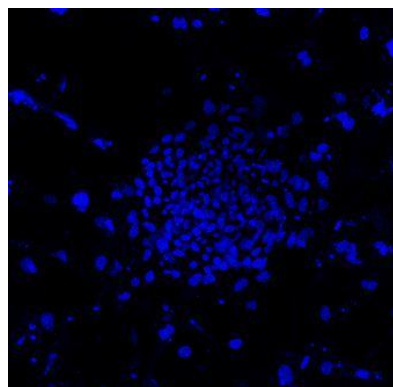


Applied StemCell

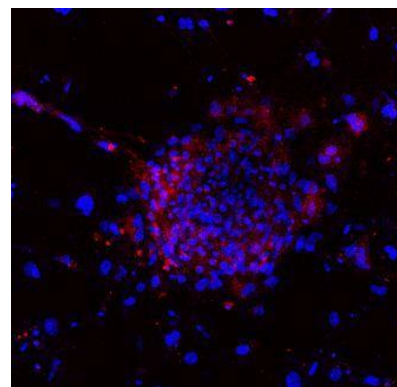
TRA-1-81



Fluorescent Staining



DAPI Staining



Overlay

Applied StemCell, Inc.,
1165 O'Brien Dr, Suite A
Menlo Park, CA 94025

Phone: (866) 497-4180 (US Toll Free); 408-773-8007 Fax: 408-773-8238
info@appliedstemcell.com www.appliedstemcell.com