



## TARGATT™ Cre-Rat with PDGFb-CreERT2 Promoter

### Product Information

**Catalog Number** 551-1 (embryo); 551-2 (rat)  
**Strain** Sprague dawley rat

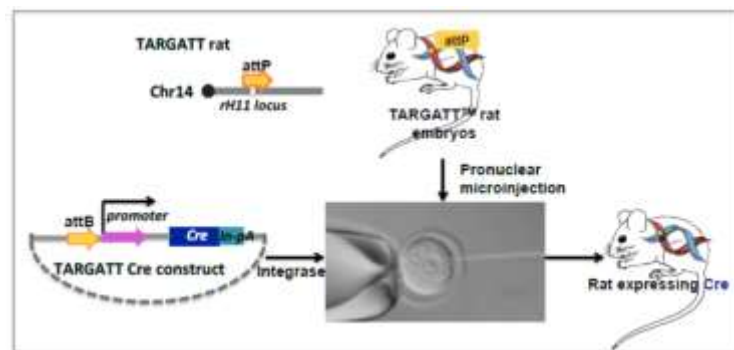
### Description

This PDGFb-CreERT2 conditional Cre-Rat also contains the Cre recombinase gene paired with PDGFb-CreERT2 promoter construct which targets the cortex neurons and is inserted into the H11 safe harbor locus using Applied Stemcell's proprietary integrase-based TARGATT™ technology and is guaranteed expression of the Cre gene driver by the chosen promoter. Furthermore, DNA recombinase activity is induced by Tamoxifen, so that this transgenic rat model will be conditional and inducible.

| Promotor Name | Technology | Tissue/Cell-specificity | Promotor Description  | Comments | Reference                  |
|---------------|------------|-------------------------|---|----------|----------------------------|
| PDGFb-CreERT2 | TARGATT™   | Neurons of the cortex   | 1.425-kb (-1360 to +75 relative to transcription start site) of the PDGF B-chain gene | n/a      | Sasahara <i>et al</i> 1991 |

### Design Strategy

#### Schematic Representation of TARGATT™ Cre-Driver Rat



#### Applied StemCell, Inc.

521 Cottonwood Dr. #111, Milpitas, CA 95035  
Phone: 866-497-4180 (US Toll Free); 408-773-8007 Fax: 408-773-8238

[info@appliedstemcell.com](mailto:info@appliedstemcell.com) [www.appliedstemcell.com](http://www.appliedstemcell.com)

Copyright 2019, Applied StemCell, Inc. All rights reserved. This information is subject to change without notice.

---

**Shipping** Embryos (dry ice) and rats (cages)

**Storage and Stability** Store TARGATT™ Cre-rat embryos in nitrogen freezer immediately upon receipt. Store the plasmids and ganciclovir at -20°C. Do not freeze-thaw plasmids repeatedly. The products provided in this kit are stable for at least 6 months from the date of receiving when stored as directed.

**Safety Precaution** **PLEASE READ BEFORE HANDLING ANY FROZEN VIALS.** Please wear the appropriate Personal Protective Equipment (lab coat, thermal gloves, safety goggles and a face shield) when handling the cells. Handle the frozen vials with due caution. Please be aware that the following scenario can occur: Liquid nitrogen can leak into the vials when the vials are submerged in liquid nitrogen. Upon thawing, the liquid nitrogen returns to the gas phase, resulting in a dangerous build-up of pressure within the vial. This can result in the vial exploding and expelling not only the vial contents but also the vial cap and plastic fragments of the vial.

**Restricted Use** This product is for research use only and not intended for human or animal diagnostic or therapeutic uses.

### Products:

| Catalog# | Component                               | Amount  | Available |
|----------|---|---------|-----------|
| 551-1    | TARGATT™ Cre-Rat Embryo – PDGFb-CreERT2 | 1 straw | inquire   |
| 551-2    | TARGATT™ Cre-Rat – PDGFb-CreERT2        | 1 rat   | inquire   |

---

### Supporting Validation Data\*:

#### Summary of Available Validation Data

The F0 mice were mated with WT to ensure transmission of the cKI genotype to F1 generation.

*\* Limited Validation Data is Available: Please inquire prior to purchasing.*

---