



TARGATT™ Cre-Rat with MOR23-CreERT2 Promoter

Product Information

Catalog Number 552-1 (embryo); 552-2 (rat)

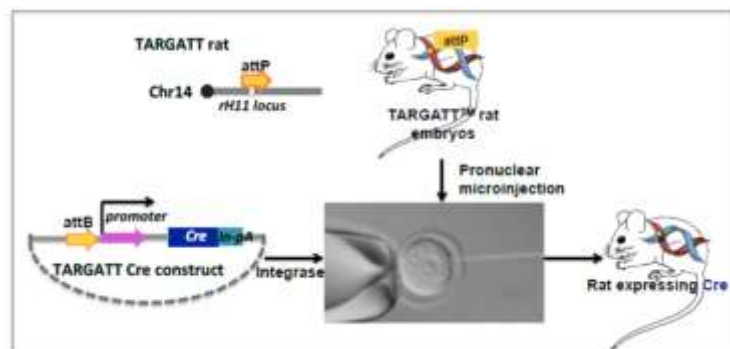
Strain Sprague dawley rat

Description This conditional Cre-Rat also contains the Cre recombinase gene paired with MOR23-CreERT2 promoter construct which targets the cortex neurons and is inserted into the H11 safe harbor locus using Applied Stemcell's proprietary integrase-based TARGATT™ technology and is guaranteed expression of the Cre gene driver by the chosen promoter. Furthermore, DNA recombinase activity is induced by Tamoxifen, so that this transgenic rat model will be conditional and inducible.

Promotor Name	Technology	Tissue/Cell-specificity	Promotor Description	Comments	Reference
MOR23-CreERT2	TARGATT™	Olfactory sensory neuronal lineage	2.2-kb of MOR23 promoter	Site-specific, CreERT2 +mCherry at attB site H11 locus	Li et al 2004

Design Strategy

Schematic Representation of TARGATT™ Cre-Driver Rat



Applied StemCell, Inc.

521 Cottonwood Dr. #111, Milpitas, CA 95035

Phone: 866-497-4180 (US Toll Free); 408-773-8007 Fax: 408-773-8238

info@appliedstemcell.com www.appliedstemcell.com

Copyright 2019, Applied StemCell, Inc. All rights reserved. This information is subject to change without notice.

Shipping	Embryos (dry ice) and rats (cages)
Storage and Stability	Store TARGATT™ Cre-rat embryos in nitrogen freezer immediately upon receipt. Store the plasmids and ganciclovir at -20°C. Do not freeze-thaw plasmids repeatedly. The products provided in this kit are stable for at least 6 months from the date of receiving when stored as directed.
Safety Precaution	PLEASE READ BEFORE HANDLING ANY FROZEN VIALS. Please wear the appropriate Personal Protective Equipment (lab coat, thermal gloves, safety goggles and a face shield) when handling the cells. Handle the frozen vials with due caution. Please be aware that the following scenario can occur: Liquid nitrogen can leak into the vials when the vials are submerged in liquid nitrogen. Upon thawing, the liquid nitrogen returns to the gas phase, resulting in a dangerous build-up of pressure within the vial. This can result in the vial exploding and expelling not only the vial contents but also the vial cap and plastic fragments of the vial.
Restricted Use	This product is for research use only and not intended for human or animal diagnostic or therapeutic uses.

Products:

Catalog#	Component	Amount	Available
552-1	TARGATT™ Cre-Rat Embryo – MOR23-CreERT2	1 straw	inquire
552-2	TARGATT™ Cre-Rat – MOR23-CreERT2	1 rat	inquire

Supporting Validation Data*:

Summary of Available Validation Data

gel picture and histology data.

* *Limited Validation Data is Available: Please inquire prior to purchasing.*

Negative control: Nestin-Cre Rat



MOR23-CreERT2

