



TARGATT™ Cre-Rat with PAG-CreERT2 Promoter

Product Information

Catalog Number 557-1 (embryo); 557-2 (rat)

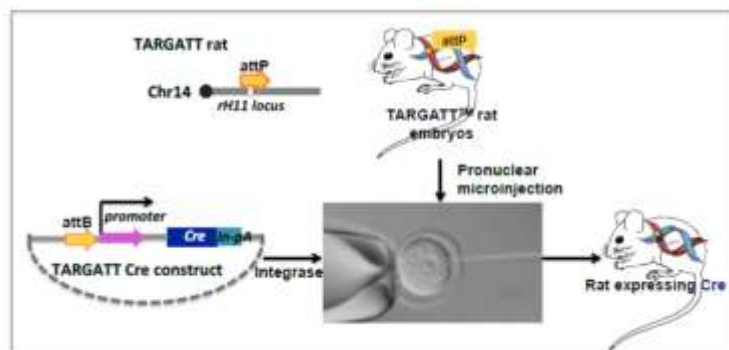
Strain Sprague dawley rat

Description This conditional Cre-Rat also contains the Cre recombinase gene paired with PAG-CreERT2 promoter construct which targets the glutamatergic neurons and is inserted into the H11 safe harbor locus using Applied Stemcell's proprietary integrase-based TARGATT™ technology and is guaranteed expression of the Cre gene driver by the chosen promoter. Furthermore, DNA recombinase activity is induced by Tamoxifen, so that this transgenic rat model will be conditional and inducible.

Promotor Name	Technology	Tissue/Cell-specificity	Promotor Description	Comments	Reference
PDG-CreERT2	TARGATT™	glutamatergic neurons	2.4-kb rat PAG (phosphateactivated glutamase) promoter	n/a	Rasmussen <i>et al</i> 2007

Design Strategy

Schematic Representation of TARGATT™ Cre-Driver Rat



Shipping Embryos (dry ice) and rats (cages)

Storage and Stability Store TARGATT™ Cre-rat embryos in nitrogen freezer immediately upon receipt. Store the plasmids and ganciclovir at -20°C. Do not freeze-thaw plasmids repeatedly. The products provided in this kit are stable for at least 6 months from the date of receiving when stored as directed.

Applied StemCell, Inc.

521 Cottonwood Dr. #111, Milpitas, CA 95035

Phone: 866-497-4180 (US Toll Free); 408-773-8007 Fax: 408-773-8238

info@appliedstemcell.com www.appliedstemcell.com

Copyright 2019, Applied StemCell, Inc. All rights reserved. This information is subject to change without notice.

**Safety
Precaution**

PLEASE READ BEFORE HANDLING ANY FROZEN VIALS. Please wear the appropriate Personal Protective Equipment (lab coat, thermal gloves, safety goggles and a face shield) when handling the cells. Handle the frozen vials with due caution. Please be aware that the following scenario can occur: Liquid nitrogen can leak into the vials when the vials are submerged in liquid nitrogen. Upon thawing, the liquid nitrogen returns to the gas phase, resulting in a dangerous build-up of pressure within the vial. This can result in the vial exploding and expelling not only the vial contents but also the vial cap and plastic fragments of the vial.

**Restricted
Use**

This product is for research use only and not intended for human or animal diagnostic or therapeutic uses.

Products:

Catalog#	Component	Amount	Available
557-1	TARGATT™ Cre-Rat Embryo – PDG-CreERT2	1 straw	inquire
557-2	TARGATT™ Cre-Rat – PDG-CreERT2	1 rat	inquire

Supporting Validation Data*:**Summary of Available Validation Data**

Limited validation data is available.

** Please inquire prior to purchasing.*